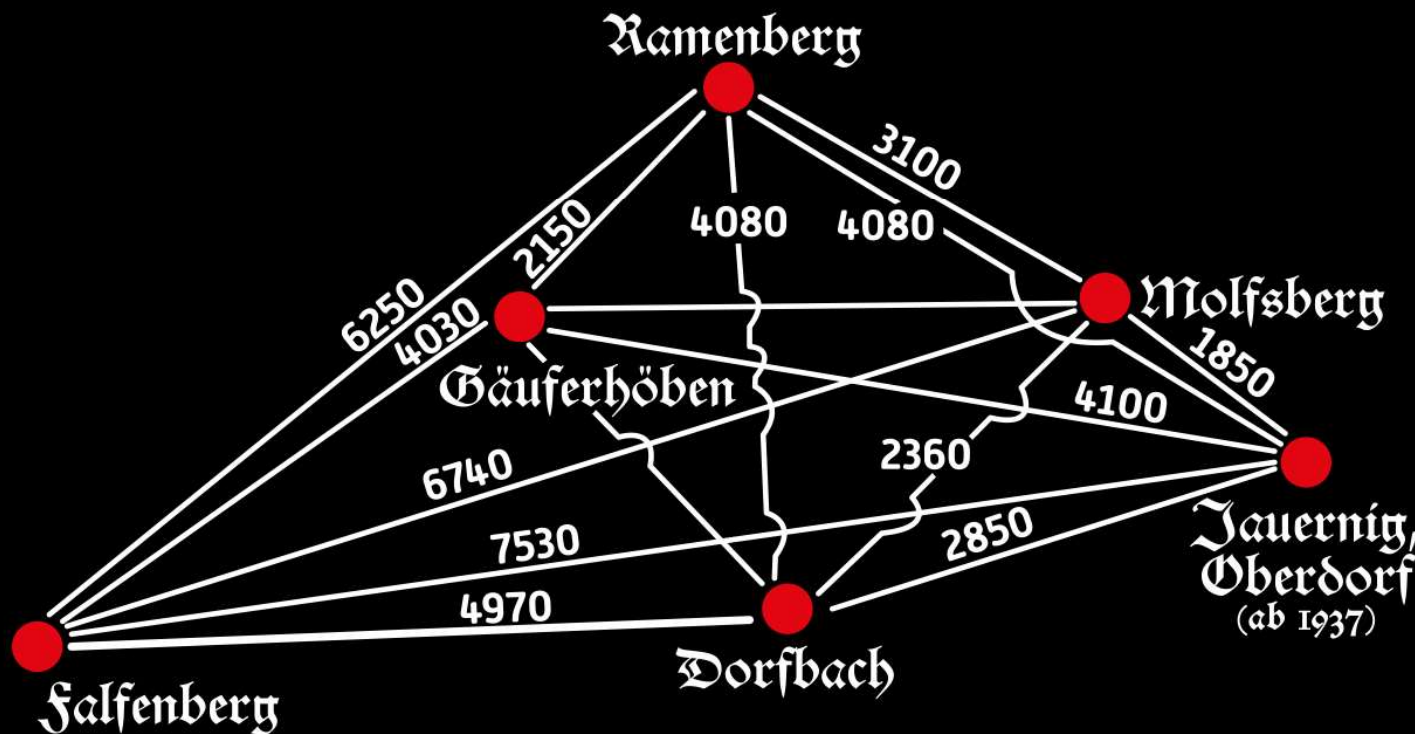


**PROJEKT RIESE  
W GÓRACH SOWICH**

**ZAPRASZAMY**

# ROZMIESZCZENIE KOMPLEKSÓW RIESE







# KOMPLEKS SOKOLEC GONTOWA.





# KOMPLEKS SOBON





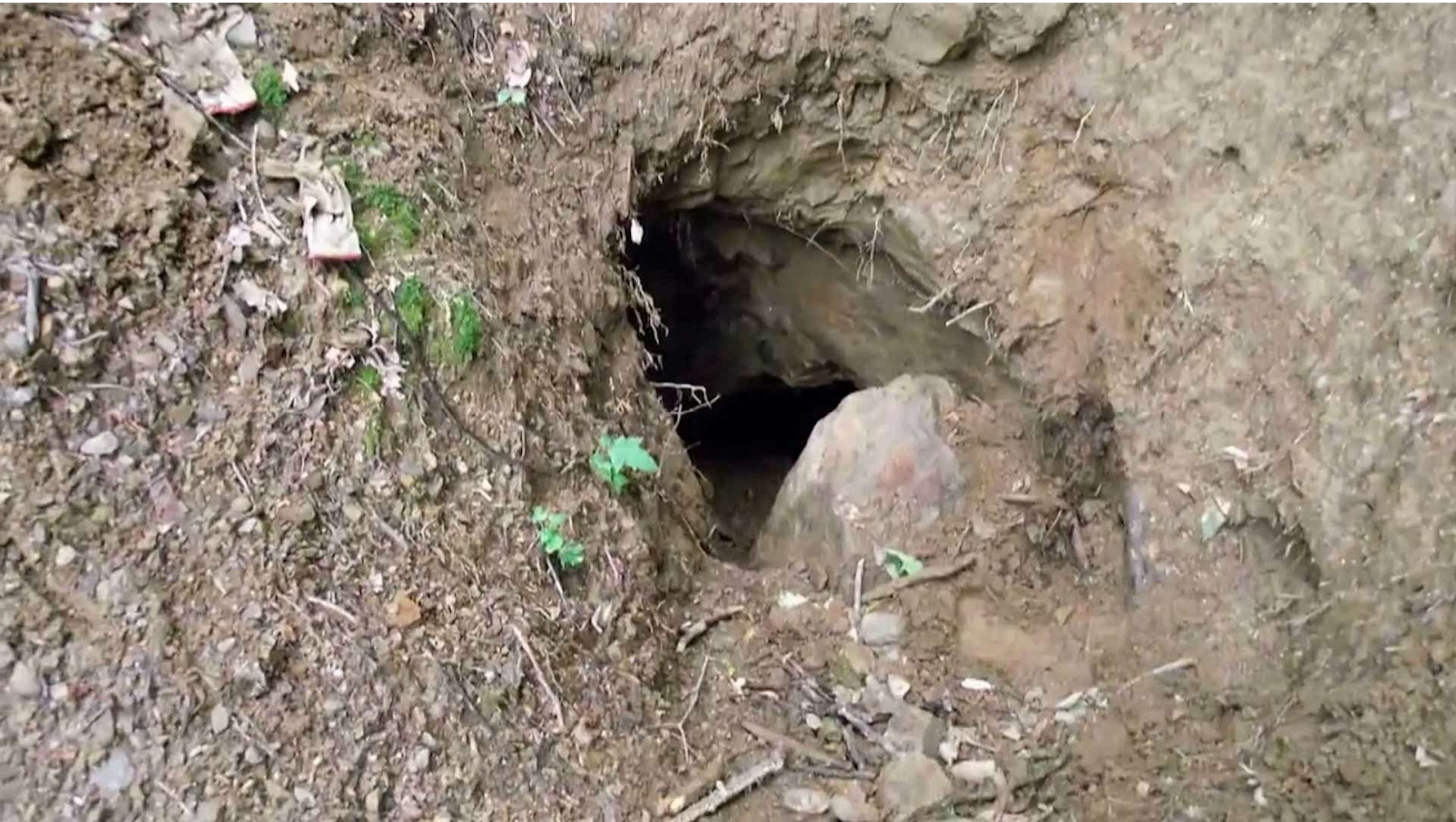
# KOMPLEKS WŁODARZ

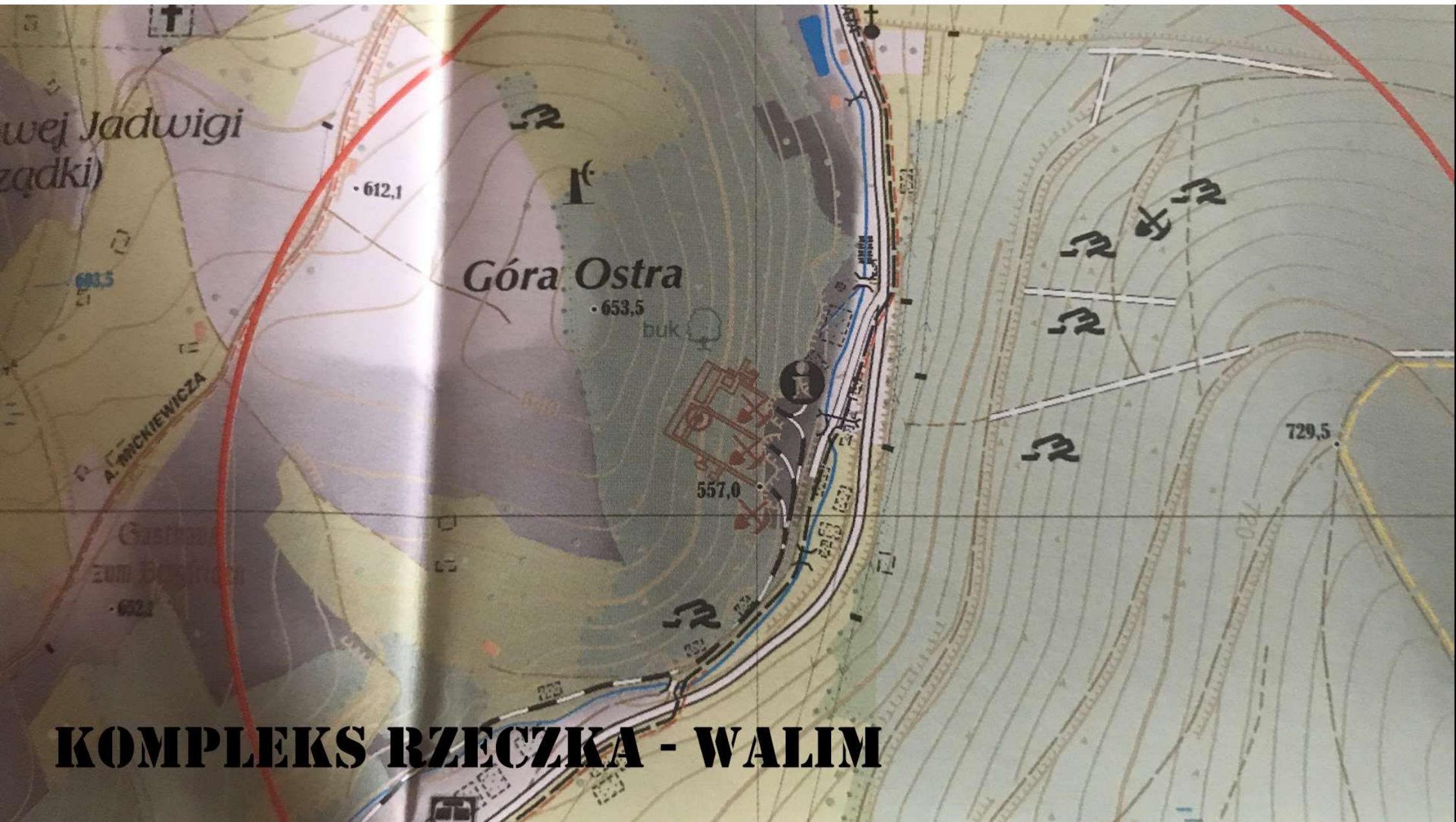






**KOMPLEKS JAWORNIK - JUGOWICE GÓRNE**





# KOMPLEKS RZECZKA - WALIM





# KOMPLEKS KSIĄŻ - PODZIEMIA



A photograph of a dark, underground tunnel. The tunnel is illuminated by several bright, circular lights. In the center of the tunnel, there is a large, arched structure made of many parallel, curved ribs, possibly a support structure or a large pipe. The walls of the tunnel are rough and rocky. The floor is dark and appears to be made of dirt or gravel. The overall atmosphere is dim and mysterious.

**DZIEKUJĘ ZA UWAGĘ**